



Saphyr Chip Well Hydration Instruction

Instruction

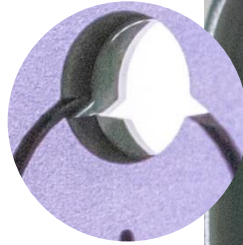
This document describes part of the Saphyr Chip Loading sequence.
Please refer to the [Saphyr System User Guide](#) or the [Loading Bionano Chip 20366](#) video for more detail.

- Place the chip on a lint-free tissue in a well-lit area
- Load the sample according to the instruction in the User Guide
- Use DNase free water to adjust water level
- Add water to inlet and outlet by making small droplets on the pipette tip then gently touch the liquid in the well
- Observe the liquid level by lowering your eye level to the bench
- Use the reflection and follow instructions to judge water level
- Proceed slowly to avoid overhydration
- Once both inlet and outlet have been filled correctly, place the plug immediately to avoid evaporation, and repeat for Flowcell 2 and 3.

1 – Empty chip

Light will reflect directly on the glass surface

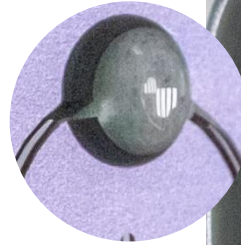
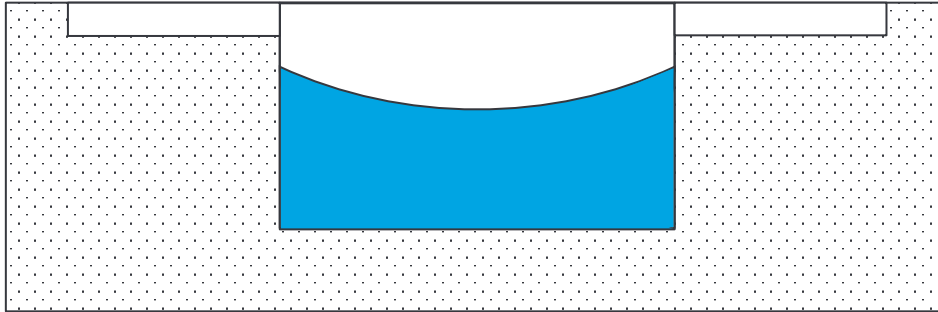
Seen before sample is added



2 – Sample is added

Water surface will be concave

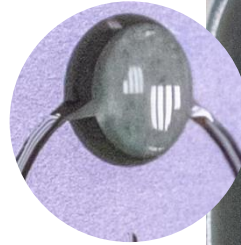
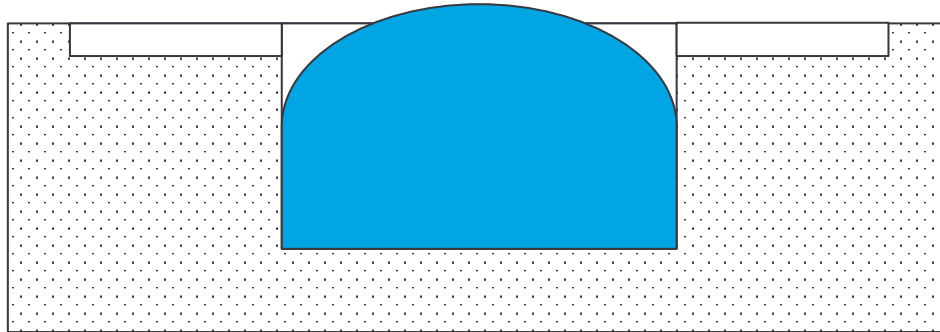
Usually seen when sample was just added to the well



3 – Start of hydration process

Water surface will be convex, with a dark outline

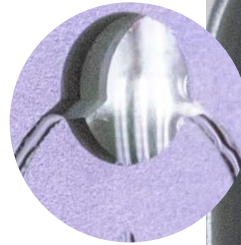
Usually seen at the beginning of hydration process



4 – Wells are flat

Light reflection will be a flat mirror
Fingers should also reflect light

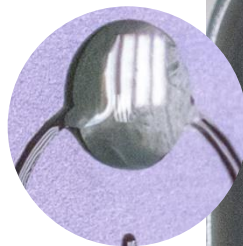
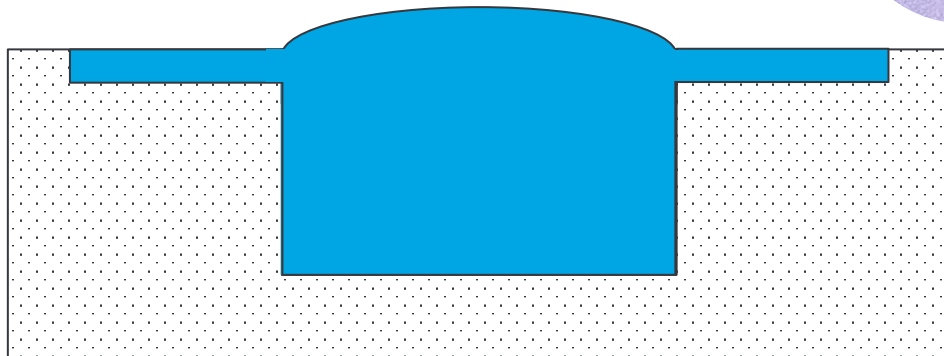
From this step, a few droplets will
finish the hydration process



5 – Wells are well hydrated

Water level will be convex, with no dark outline

Place the Plug

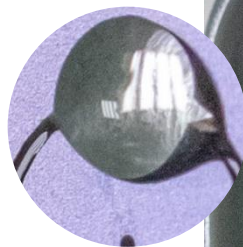
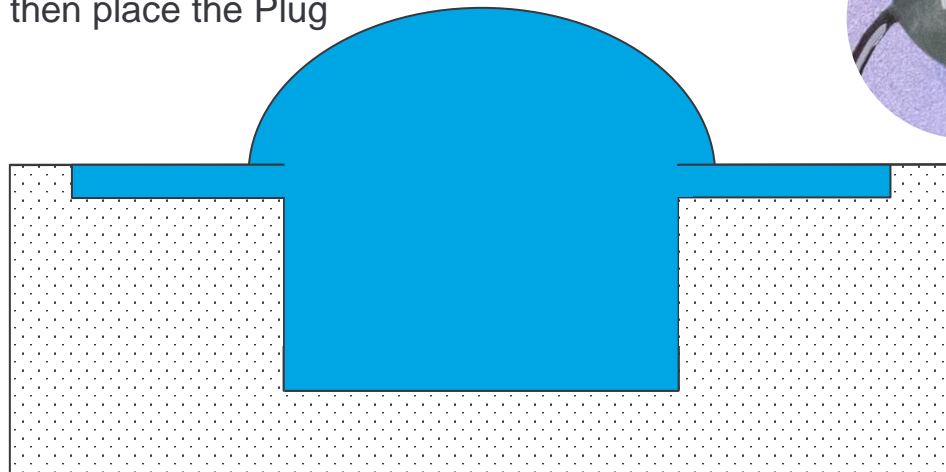


6 – Wells are spilled over

Water level will be hemi-spherical

Liquid overflows onto the surface

Let your sample evaporate to correct level,
then place the Plug



Thank You

